

Focus on.
Hamm.
Discover
a city.



LIFE | LIVING
URBAN DEVELOPMENT

Living
in the city.

page 8

GREEN & BLUE

In the midst of the city.
In the midst of the
countryside.

page 4

LIFE | LIVING
URBAN DEVELOPMENT

Most family-friendly
city in Germany.

page 12

„CREATIVREVIER“
HEINRICH ROBERT

When coal
becomes culture.

page 13

LOGISTICS
HYDROGEN
DIGITALIZATION

Innovation.
Future.

page 14



TRADE | CRAFT
LOGISTICS | HEALTH

High potential.
Thanks to synergies.

page 20

TOURISM
LEISURE TIME

Focus on.
Quality of living.

page 24

CULTURE | EVENTS

Absolutely worth
seeing.
Absolutely colourful.

page 28

RESEARCH
TEACHING
TECHNOLOGY

Initiator.
For the future.

page 18

SPORTS

What happens on
the pitch is crucial.

page 32



Burghügel Mark
Heessen Castle
Ringanlagen - Ostring



In the midst of the city. In the midst of the countryside.

Where else you can find this? The Lippe river, the DattelIn-Hamm Canal, spa gardens with graduation tower and a “green belt” around the city center – all in the midst of the city. In addition, natural reserves, near-natural areas and agricultural landscapes: No matter where you are, you can reach the countryside within only ten minutes. More than three quarters of the urban area are green and open spaces. And that shall remain unchanged! The numerous parks are designed by landscape architects and in the *Maximilianpark* you can even see plantings designed by the world-renowned landscape architect Piet Oudolf.



© Thorsten Hübner

As a recreational park, this park has the same history as the *Lippepark*. Both were created on former colliery sites.

The Lippe river, DattelIn-Hamm Canal and Haarener lake are paradises for water sports enthusiasts. Whether canoeist, captain or wakeboarder. With us, everyone gets ahead and comes back to shore. From the new water sports center and some jetties for pleasure craft, you can walk through the green countryside to the city center.

Graduation
Tower Garden

Water reservoir towers
in Hamm-Berge

Haarener lake



© Thorsten Hübner



© Hans Blosssey



Nature reserve Lippe floodplain

GREEN AND BLUE

Our greatest urban nature and environmental protection project is the design of the experience area Lippe floodplain. The area of approximately 195 hectare extends over three city districts with a floodplain-park, beach arena and an adventure farm with focus on social inclusion.

The LIFE+ project Lippe floodplain is also groundbreaking for Hamm. Since its renaturation, you can discover again beavers and storks near the Lippe, experience the diverse nature at close quarters on foot or when using the Lippe ferry *LUPIA* or you can simply relax.

Incidentally, water has been playing an important role for the city since the city was founded at the confluence of the Lippe and Ahse on Ash Wednesday in 1226: At that time, for the water supply and the protection of the city, later as a trade route for the Hanseatic League and today for leisure activities.



3 Fotos: Thorsten Hübner

Spa gardens

Water sports on the Lippe

Living in the city:
Rietzgarten-quarter



© Thorsten Hübner



Living. In the city.

Life is pleasant in Hamm: Whether comfortable urban living in close proximity to all offers of day-to-day life and leisure opportunities or pleasant, quiet and rural living: The living situation in Hamm impresses with real estate offers at moderate prices. We can offer housing space for students, couples and families as well as barrier-free living options for people with disabilities and restricted mobility.



Water sports center:
Center for water sports
enthusiasts and mee-
ting area for everyone

Life. In the city.

We consistently develop the city and urban living in our green and modern city. The *CreativRevier Heinrich Robert*, the experience area Lippe floodplain and the ambitious goal of making Hamm the most family-friendly city in Germany are some of our current projects.

With its water sports center and the R-Café the *Kanalkante* skillfully connects the city center with the experience area Lippe floodplain.

Due to this, the sporty and recreational potential of the Datteln-Hamm Canal and the river Lippe becomes even more attractive. Bicycle boulevards make cycling more relaxed and an artistically designed junction for bus traffic is being created at the *Westentor*.

Cyclist-friendly:
Cycling routes and *Sattel-Fest*

Experience area Lippe floodplain

Pub culture



© Thorsten Hübner



© Thorsten Hübner



© René Golz

Most family-friendly city in Germany.

Hamm has already taken the first big step towards becoming the most family-friendly city in Germany by halving the daycare fees. The guarantee of daycare places for children and the significant expansion of daycare centers are also attractive for families - combined with the low housing and rental costs compared to large cities.

In the future, all services should be available to parents from a single source in the family town hall as the central point of contact. Whether on site in direct consultation or conveniently online: Families should be advised quickly, easily, comprehensively and reliably.

And with the founding of our own youth employment agency, young school leavers are actively advised and supported in entering the workforce.



When coal becomes culture.

„CREATIVREVIER“ HEINRICH ROBERT

The *CreativRevier Heinrich Robert* is being built right there where over 5,000 miners worked, namely on the former Heinrich Robert colliery site.

With 53 hectares, the creative area for art, culture, creative, service and leisure industries has plenty of space for agencies, artists and events, but also for gastronomy, hotels, retail and living.

Cultural highlights, a variety of events and offers for young and old, but also the connection to the *Lippepark* and various cycling routes make the *CreativRevier* an attractive leisure destination.



Hydrogen not only moves buses.

Innovation.

By means of the hydrogen center, the city will push ahead with the production of green hydrogen, strengthen the industrial location and will enable the use of hydrogen as an energy source and storage for many companies in the next few years. With the hydrogen alliance, a hydrogen network is being set up together with partners from business and science to support and advise companies in the implementation of hydrogen-powered innovation projects. A specific agreement for local public transport states that every city bus will be climate-neutral by 2030. 30 buses will soon be put into regular service.

There is one central contact for business in Hamm: IMPULS. Die Hammer Business Agentur. All economic topics are bundled here and implemented in forward-looking projects.



© Andreas G.-Mantler

Future.

The new IMPULS company creates lean structures, short distances and clear contacts for the future of Hamm as a business location. By means of IMPULS we boost our major projects, such as the *MULTI HUB WESTFALEN*, the hydrogen alliance and the innovation center with great energy - also to be an even stronger partner and better service provider for existing companies.

In order to achieve Germany's climate policy goals and the associated reduction in CO2 emissions, there is no way around transporting goods by railway. »

Shunting yard:
Future rail transport



Foto: Andreas G. Manthler

Hub for international transport

Innovation.

What was once the largest shunting yard in Germany is to be expanded into a multimodal rail logistics hub with innovative loading technology and should become a flagship project for climate-friendly rail freight transport in Europe: the *MULTI HUB WESTFALEN*. The revitalization picked up speed with the founding of the Development Agency for Sustainable Freight Transport. Thus, the field of action "Sustainable and innovative freight transport logistics" is determined as a new focus of the regional economic strategy of the city of Hamm. The new company uses its locational advantage and its trimodal connection by rail, road and waterway as a motor for climate-friendly economic



Innovation center:
Space for ideas

Future.

development and the strengthening of the rail as an environmentally friendly mode of transport beyond the Westphalia region. At the same time, the 60-hectare site is excellently linked to the European transport system thanks to its favorable geographic location.

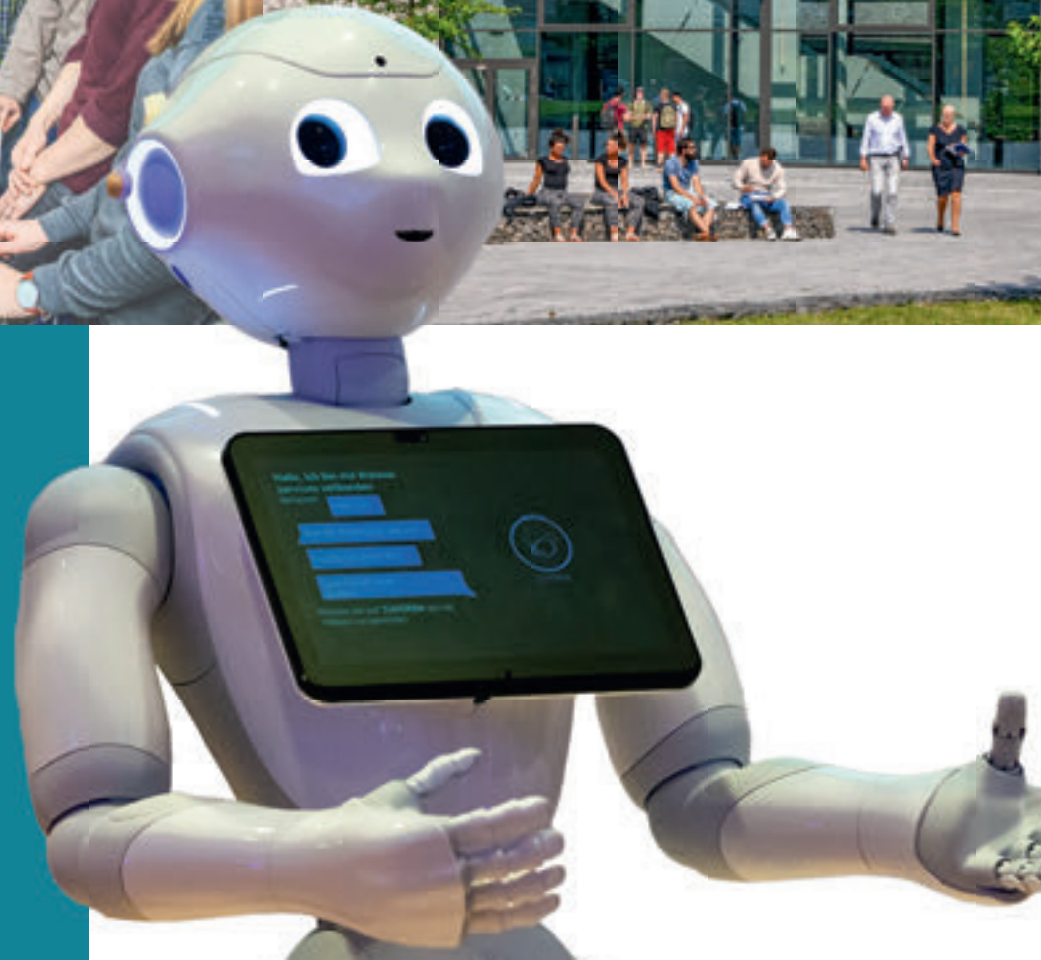
The Innovation Center Hamm (ICH) offers innovative small and medium-sized companies as well as start-ups an environment with the best starting and growth conditions for economic success. In the immediate vicinity of the Hamm-Lippstadt University of Applied Sciences, it sets new standards in terms of equipment and inter-linking of science and business. In addition to offices and co-working spaces, the S1 laboratory, the Living-Lab and the accessible "Technikum" will offer the opportunity to work on the major future topics, such as "Sustainability", "Digitalization" and "Industry 4.0" and to include the current state of research at the same time.

Digital dissection table:
State-of-the-art technology
at universities

Campus Hamm-Lippstadt University of
Applied Sciences



Foto: Hene Golz



© 2.x Thorsten Hübner

Initiator. Structural change.

Hamm promotes the creative minds of tomorrow - at the Hamm-Lippstadt University of Applied Sciences (HSHL), the Fraunhofer Application Center, the private SRH University of Applied Sciences in North Rhine-Westphalia and the Innovation Center. At the Fraunhofer Application Center SYMILA, the employees work hand in hand with the students. The application center is a seal of quality for the city as a new location of science.

As part of the project "Knowledge Creates Success", the cooperation between universities and industry is promoted, young talent is awakened and specialists are tied to the location at an early stage.

Regional companies can make use of this research competence and thus, strengthen their own innovative power. Even while they are still at school, young scientists and technicians are strengthened in cooperative research projects with the universities.



SRH University of
Applied Sciences
in North
Rhine-Westphalia

© René Golz



Get started
healthily

Craftsmanship
in Hamm

High potential.

Health plays an important role in Hamm. With more than 8,000 jobs, the healthcare sector represents a major part of qualified jobs in Hamm. The companies belonging to health and social services are the largest employers in Hamm and the University of Applied Sciences for Health Professions is located on the *CreativRevier* Heinrich Robert. Among others, further employers are logistics companies along the Datteln-Hamm Canal.

Whether handicraft or service. Whether family business, medium-sized or large companies, a wide variety of products are manufactured in Hamm and are exported all over the world.



Thanks to synergies.

Judiciary plays also an important role for the city. The higher regional court and the higher labour in Hamm are rated among the largest courts of their kind in Germany, with a corresponding number of employees.

Companies in Hamm appreciate and use the balanced mix of industries and the company density for synergy effects, business contacts and cooperation. With a high potential of well-trained and motivated employees, we can offer a big variety of development opportunities for skilled performance.

Shopping in Hamm. Really something for everyone.

Trade, negotiating and personal advice play a key role regarding the shopping experience. Whether in an owner-managed shop, in the shops of well-known fashion labels or in the Allee-Center Hamm with its about 90 shops. Whether in the city center, in the districts or on the markets. Diversity makes up the shopping experience in Hamm.

Additionally, we have an excellent transport infrastructure. By water, by rail or via the motorways A1 and A2 – Hamm is easily accessible. The ICE train station bundles the rail cargo and the local public transport. Hamm's canal port is one of Germany's busiest inland ports.

You can safely land on the sports airfield in direct proximity to the city center – and at the airports Dortmund, Münster/Osnabrück and Paderborn.

Shopping experience in the city
Flea market in the *Südring*
Good landing in the city
Refreshing experience at the market



© René Golz





© 3x Thorsten Hübner

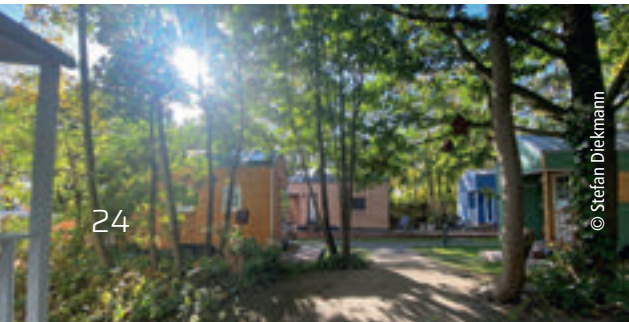


Focus on. Quality of life.

More than 500,000 people visit the thermal spa *Maximare* and the *Maximilianpark* every year - this underlines the popularity of these large leisure facilities in Hamm and its region. In addition to a zoo and climbing park in the countryside, these are very nice excursion destinations for young and old and great attractions in the city.

In addition to these "classics", you can even travel to Asia in Hamm when visiting the Sri Kamadchi Ampal Temple. It is the second largest temple in Hindu architectural style in continental Europe. You can easily reach it by bike, as well as the castles of Oberwerries or Heessen, since Hamm has a well-developed network of cycling paths and offers nice opportunities for breaks.

"Hamm in one day". You can explore Hamm in a relaxed manner by bike on the *Panorama-Route*, a 32-kilometre circuit. This way, you can perfectly combine nature and sights along the Lippe and the Datteln-Hamm Canal. If you are planning a multi-day tour, Hamm is a great place for a stopover, for example on the *Römer-Lippe-Route*, a transregional cycling route along the river. In Hamm you can spend the night in hotels, holiday apartments, but also in a castle, a shepherd's hut or in a tiny house.



Cycling in Hamm

Overnight stay
in Hamm:
Pier9 Tiny House Hotel

Asia in Hamm:
Sri Kamadchi Ampal
Temple



Water skiing at the Haarener lake

Lakeside terrace in the *Maxipark*

Climbing park

Castle of Oberwerries







1. In the zoo, with its 550 animals and 80 species, you are always very close. Eye to eye with the tiger or in direct contact in the petting zoo.
2. Whether art or concert, weekly or Christmas market: The marketplace becomes a stage.
3. Our landmark is the glass elephant in the *Maximilianpark*. The park is a transregional attraction with a lot of nature, playgrounds, exhibitions and the largest butterfly house in North Rhine Westphalia.
4. You can spend a relaxing (family) day in the Maximare spa and water park: 100 meter slide, brine, sauna, spa area and 50 meter sports pool.
5. The parc named *Lippepark* is a meeting place for the people from the three neighboring districts. Intercultural, interreligious and sporty.
6. With three entertaining plays for the whole family in the summer, the *Waldbühne Heessen* is one of Germany's most popular amateur open-air stages.





© Lichtbild Hamm



Absolutely worth seeing. Absolutely colourful.

Take a trip to the exciting history of the city or to Egypt when visiting the *Gustav-Lübcke-Museum*. The museum has the most comprehensive Egyptian collection in North Rhine-Westphalia. It also impresses with large special exhibitions and its own program specifically tailored to the "smallest" art enthusiasts.

In Hamm we like to act: On the open-air stages of the *Waldbühne Heessen* or in the bandstand in the spa gardens, on the marketplace or in the rewarded HELIOS theater for children.

The size ranges from the big stage in the *Alfred-Fischer-Halle*, a former machine hall, to the *Kurhaus* and small stage in the Martin Luther art quarter. At many striking points, a variety of different art works crosses your path: Starting with large murals through to shop windows decorated with artefacts and large and small sculptures lovingly staged along the paths. Throughout the city, the versatile local scene of creative people designed its home town.

Art quarter
Martin-Luther quarter

"KunstDünger"
on the marketplace

Gustav-Lübcke-Museum

Music in the spa gardens



© 3 Thorsten Hübner





CULTURE | EVENTS

Enjoy the musical atmosphere when visiting various events, like the *Westfälisches Musikfestival Hamm*, the International Jazz Festival or big classical, pop or hit concerts.

Literature, dance, drama, comedy or cabaret, but also fairs, markets and exhibitions complete the versatile range of events.

You have the free choice in terms of the annual program: Whether the #h4 *KulturSommer* with *KunstDünger*, concerts in the bandstand, open-air cinema at the Canal and the big *KulturFest h4* with local artists and a national top act. Or the funfair *Stunikenmarkt* in the city center, the classic car rally *HammerFahren* and the Christmas market with ice rink.

These various and numerous events attract locals and guests. The same applies to the city districts with the *Hallohpark-Fest* or their special district festivals.



© Robert Szkudlarek



Open-air: *KulturFest h4*

Funfair in the city: *Stunikenmarkt*

Maximilianpark: Markets and festivals

Kurhaus: Music and theatre



© Horst Lokuschat



© 2 X Thorsten Hübner

“What happens on the pitch is crucial”

... or what happens on the water, the dance floor, in the sand, on the mat, the track, the ice or ... Hamm is sporty. More than 38,000 people in 140 clubs engage in sports in Hamm. Classics like football or handball, but also exotics like underwater rugby are on the sporting schedule.

The men's handball team of ASV Hamm-Westfalen plays in the 2st Bundesliga, the roller hockey men's team of SK Germania Herringen are German champions and German cup winners.

Hamm is also the home of World Cup winners and medal winners at European and World Championships.

Of course, we also promote individual and popular sports. For example, by means of new construction and modernization of large sports facilities or with the signposted marathon route leading through all districts.

If you want to experience competitive atmosphere, the *MaxiLauf* is a good opportunity to do so. The *Sattel-Fest* is more relaxed: Up to 30,000 cyclists enjoy the car-free route between Hamm and Soest - including the beautiful nature and nice opportunities for breaks.



MaxiLauf

Sports facilities for the future:
SV Westfalia Rhybern

Skating in the
Lippepark



2st Bundesliga
ASV Hamm-Westfalen

Canoeist Stefan Hengst
bronze at the world
championships.

Tens of thousands cyclists
at the *Sattel-Fest*



Founding of the city by Count Adolf von Altena-Mark at the confluence of the rivers Lippe and Ahse – *Thom Hamme*. Hamm becomes the capital of the County of Mark, gets town walls and an own town seal.

Beginning of the Reformation in Hamm, until 1562 enforcement of the Reformed confession.

Opening of the *Gymnasium Illustre* in Hamm.

The third major city fire of the 18th century destroys Hamm's city archive.

The higher regional court is relocated from Kleve to Hamm.

1226 1417 1532 1618-48 1657 1734-39 1741 1807-13 1820 1847 1853-

First naming of Hamm as Hanseatic city.

In the Thirty Years War Hamm is conquered, devastated and occupied twenty times.

Construction of the Luther Church.

Hamm under Napoleonic rule

By opening the railway line Cologne – Hamm - Minden and further lines to Münster, Paderborn and Hagen, Hamm develops to an important traffic hub.



Construction of the wire works of Josef Cosack (Westphalian Union, later Thyssen Draht AG) and Wilhelm Hobrecker (Westfälische Draht-industrie) and the machine factory Banning.

Opening of the DattelIn-Hamm-Canal with new port.

World War II: Large parts of the city are destroyed by bombs. By the occupation by American troops on April 6, 1945, the war ends for Hamm.

First state horticultural show with the *Maximilianpark* as recreational area and event location. The building of the former coal preparation plant is redesigned into the world's largest glass elephant by the artist and architect Horst Rellecke.

Extension of the *Kurhaus* through a multifunctional hall for theatre plays, concerts, festivals, conferences and congresses.

Masterplan "Hamm ans Wasser"

581901-1219141911-271939-4519751984199320012003 >>>>>

Initial commissioning of the coal mines *Heinrich Robert, Maximilian, Radbod* and *Sachsen*.

Reconstruction and new construction of Hamm's station. Largest shunting yard in Europe with a daily capacity of more than 10,000 wagons.

Municipal reorganization: Hamm as a big city is formed.

Opening of the *Gustav-Lübcke-Museum*, a modern building designed by the Danish architects Bo and Wohlert.

H I S T O R Y



The city of Hamm gets (back) another landmark: The overflowing beer glass – company logo of the Isenbeck brewery closed in 1990, as full-size reconstruction.

By closure of the *Bergwerk Ost Heinrich Robert* more than 100 years of mining tradition come to an end.

Maximare Erlebnistherme.
Large waterpark with pool-, sauna- and spa area, brine and 100-meter slide.

Life Project and Life+ Project Lippe floodplain as great conservation projects.

Graduation Tower

Redesign of the *Ringanlagen* (green belt). Among others, upgrading of the *Ostring* between bandstand and *Bärenbrunnen*.

2003 2004 2005 2008 2009 2010 2011

Former postal parcel station becomes the new Technical City Hall.

University location with SRH-University for Logistics and Economics (2005) and the HSHL-University Hamm-Lippstadt (2009).

Westpress Arena

Heinrich-von-Kleist-Forum with central library, SRH and adult education center (Urban Redevelopment West).

Redesign of the station forecourt named *Platz der Deutschen Einheit* (Urban Redevelopment West).



© Mirko Reetz

“Hamm is a dynamic city on the move. We are on our way to become the most family-friendly city in Germany. We want to accomplish a sustainable, economic boom including good and secure jobs and we constantly work on expanding climate-friendly means of transport in order to manage the mobility revolution.”

Marc Herter
Lord Mayor of the city of Hamm

Lippepark: A recreational park for families and a *Haldenpark* is created on the former colliery site of *Schacht Franz (Heinrich Robert)* and *Radbod*.

+

New construction of the music school as an architectural landmark.

2012 2015 2016

Takeover of the zoo by the city.

Marathon route: Signposted running, cycling and hiking route through all districts.

- Opening of the water sports center
- Halving of day care fees
- Kick-off for *MULTIHUB Westphalia*/ Development of the shunting yard
- Former coal mine *Heinrich Robert* becomes the location of the University of Applied Sciences for Health Professions
- Premiere of the big culture festival *h4*

- Family town hall, digital and analogue
- Founding of a youth employment agency
- Footpath *Pauluskirche to Nordringpark*
- Redesign of *Hans-Böckler-Platz*
- Opening of the experience area
- *Lippe floodplain*
- Construction of an electrolysis plant
- Production of hydrogen

2020/21 2022 ab 2023

- Expansion program: 14 new day care centers
- Central contact for the Hamm's trade and industry:
- Founding of *IMPULS. Die Hammer Business Agentur*
- Reopening of the *Nordring*
- Modernization of the zoo
- Creating Hamm as a hydrogen location:
- Conversion of the bus fleet to hydrogen drive
- Opening of the innovation center

FUTURE

182.000

IN-HABITANTS

As big as Malta

ALREADY KNOWN?

Glass elephant

BOCKUM-HÖVEL
Around Radbod: Cycling, Culture and Lake

World's highest building in the shape of an animal

HEESSEN:
"Curtain up!":
Waldbühne
with **200** actors and **1800** spectators

UENTROP
Asia
in Hamm:
Sri Kamadchi
Ampal Tempel

Water reser-
voir Towers

RHYNERN
Pressure equa-
lization (before
water distri-
bution)

5

Motorway exits –
Easily accessible via
the main motorways
A1 and A2
ICE and IC train station

M
iddle
M

Previously Higher
regional Court,
Today City Hall with
holding cell

PELKUM

Green and blue oasis:
Selbachpark and
outdoor swimming pool

HERRINGEN

Kissingen
Höhe:

Former pit heap
turns into bare-
foot path

Editorial:

City of Hamm, Office of the Lord Mayor
Department for Economics, Digitalization,
City Marketing and Tourism

Design: HanigDesign, Hamm

Printers: Kemna Druck Kamen GmbH, Kamen

Edition: 500 pieces

Information:

„Insel“, Verkehr und Touristik
Willy-Brandt-Platz

59065 Hamm

Fon: 02381 23400

Fax: 02381 2742498

info@verkehrsverein-hamm.de

www.hamm-tourismus.de



Tips on events, leisure activities
or sights can be found at:
www.hamm-tourismus.de

Information and tickets for city tours
as well as gift ideas are available in our
online shop at:
www.hammshop.de